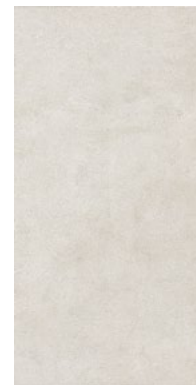



60x60 - 23<sup>1</sup>/<sub>8</sub>" x 23<sup>3</sup>/<sub>8</sub>"  
**SFT 160** | GRIGIO CHIARO  $\approx 11$  mm   
59,5x59,5 - 23<sup>1</sup>/<sub>8</sub>" x 23<sup>3</sup>/<sub>8</sub>"  
**SFT 16RT** | GRIGIO CHIARO RETTIFICATO  $\approx 11$  mm 



45x45 - 17<sup>1</sup>/<sub>8</sub>" x 17<sup>1</sup>/<sub>8</sub>"  
**SFT 101** | GRIGIO CHIARO 



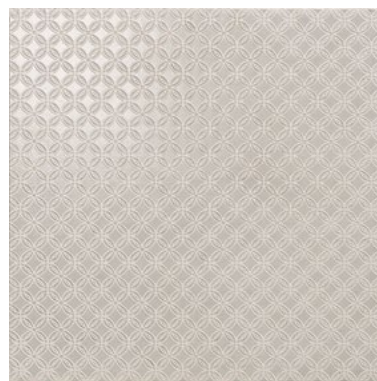
30x60 - 11<sup>13</sup>/<sub>16</sub>" x 23<sup>3</sup>/<sub>8</sub>"  
**SFT 011** | GRIGIO CHIARO 



30x60 - 11<sup>13</sup>/<sub>16</sub>" x 23<sup>3</sup>/<sub>8</sub>"  
**SFT D013** | CAMPITURA  
TEXTURE GRIGIO CHIARO 



30x60 - 11<sup>13</sup>/<sub>16</sub>" x 23<sup>3</sup>/<sub>8</sub>"  
**SFT D17K** | CAMPITURA  
RAMAGE GRIGIO CHIARO 



60x60 - 23<sup>1</sup>/<sub>8</sub>" x 23<sup>3</sup>/<sub>8</sub>"  
**SFT D161** | CAMPITURA TEXTURE GRIGIO CHIARO  $\approx 11$  mm   



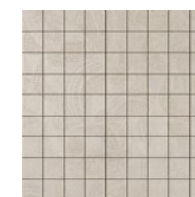

45x45 - 17<sup>1</sup>/<sub>8</sub>" x 17<sup>1</sup>/<sub>8</sub>"  
**SFT D103** | CAMPITURA TEXTURE  
GRIGIO CHIARO   




30x30 - 11<sup>13</sup>/<sub>16</sub>" x 11<sup>13</sup>/<sub>16</sub>"  
**SFT 117** | MOSAICO 2,5x2,5  
GRIGIO CHIARO R10   




30x30 - 11<sup>13</sup>/<sub>16</sub>" x 11<sup>13</sup>/<sub>16</sub>"  
**SFT 183** | MOSAICO 5x5  
GRIGIO CHIARO R10   

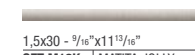
30x30 - 11<sup>13</sup>/<sub>16</sub>" x 11<sup>13</sup>/<sub>16</sub>"  
**SFT 115** | MOSAICO 5x5  
BRILLANTI GRIGIO CHIARO   




8x30 - 3<sup>1</sup>/<sub>8</sub>" x 11<sup>13</sup>/<sub>16</sub>"  
**SFT L10K** | BORDO BOISERIE  
GRIGIO CHIARO   




1,5x8 - 9/16" x 3<sup>1</sup>/<sub>8</sub>"  
**SFT L11K** | ANGOLO BOISERIE  
GRIGIO CHIARO   





1,5x30 - 9/16" x 11<sup>13</sup>/<sub>16</sub>"  
**SFT M13K** | MATITA JOLLY  
GRIGIO CHIARO   




1,5x1,5 - 9/16" x 9/16"  
**SFT J15K** | RACCORDO MATITA  
GRIGIO CHIARO   



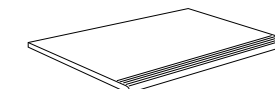

30x60 - 11<sup>13</sup>/<sub>16</sub>" x 23<sup>3</sup>/<sub>8</sub>"  
**SFT 108K** | MATTONCINO GRIGIO CHIARO   




7x60 - 2<sup>15</sup>/<sub>16</sub>" x 23<sup>3</sup>/<sub>8</sub>"  
**SFT B16K** | BATTISCOPA  
GRIGIO CHIARO   




7x45 - 2<sup>15</sup>/<sub>16</sub>" x 17<sup>1</sup>/<sub>8</sub>"  
**SFT B15K** | BATTISCOPA  
GRIGIO CHIARO   

30x60 - 11<sup>13</sup>/<sub>16</sub>" x 23<sup>3</sup>/<sub>8</sub>"  
**SFT G10K** | GRADINO  
GRIGIO CHIARO INCISO 